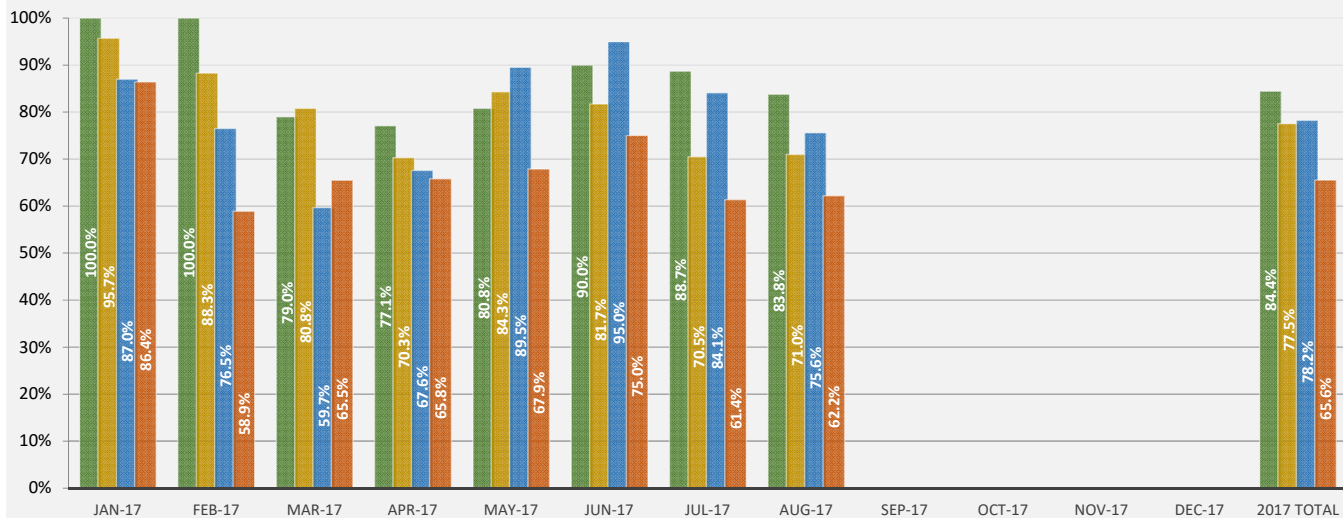




CRMCA Concrete Testing Assessment Program Percentage of Each Question Meeting Requirements



Q1 - Is the testing technician currently ACI Field 1 certified to test concrete?

Q2 - Excluding preliminary check tests, was the concrete sampled in accordance with ASTM C172?

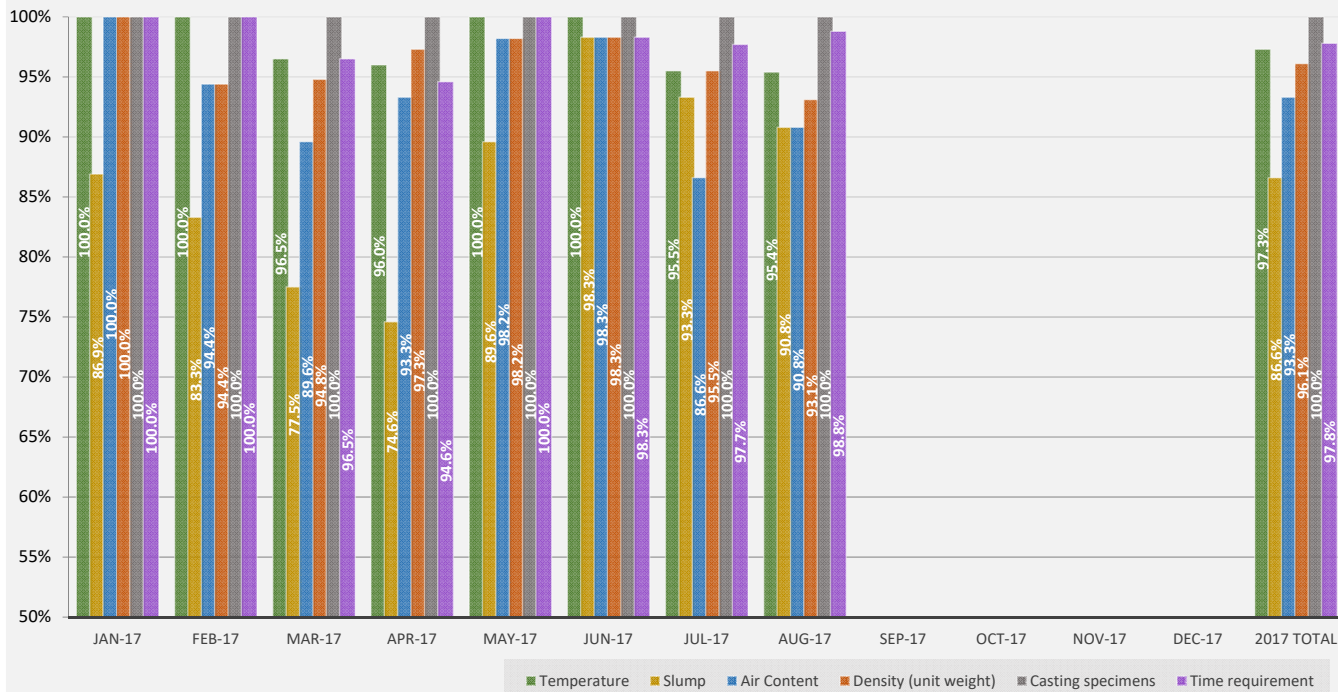
Q3 - Were physical property tests completed and strength specimens molded (if required to cast) in accordance with the appropriate ASTM procedure?

Q4 - Were the concrete specimens (if required to cast) stored in an initial curing environment following ASTM C31, section 10.1.2?

■ Question 1 ■ Question 2 ■ Question 3 ■ Question 4

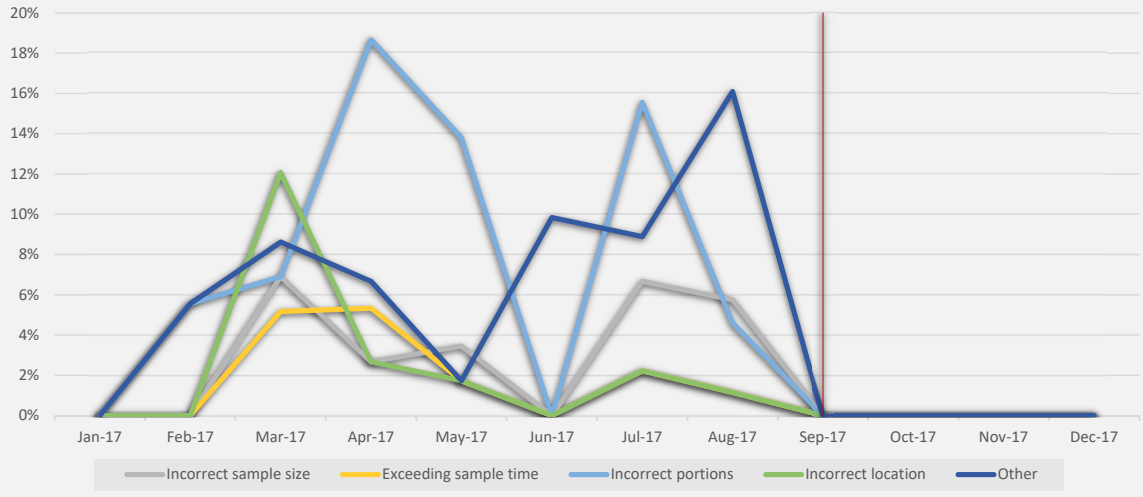


CRMCA Concrete Testing Assessment Program Percentage of Each Test Procedure Meeting Requirements

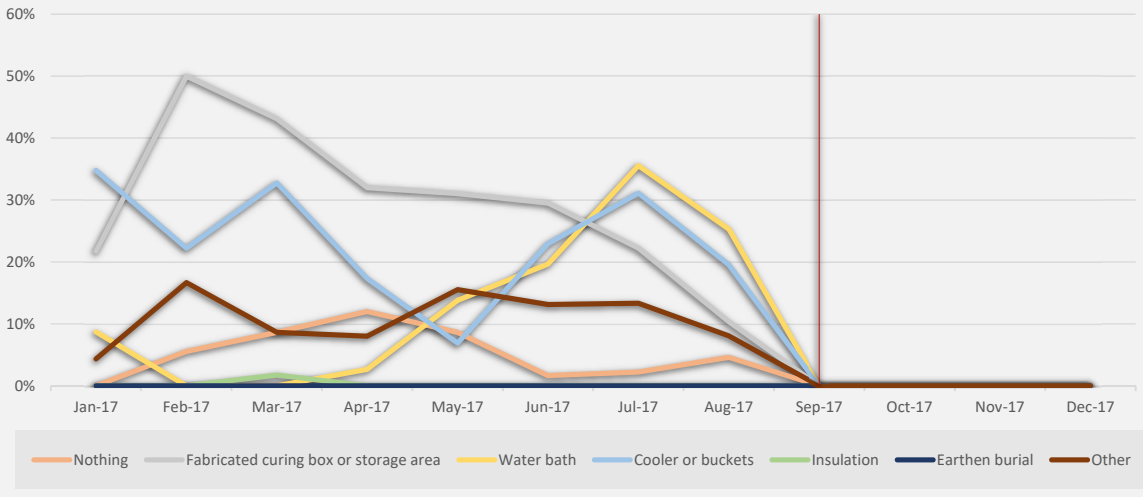


■ Temperature ■ Slump ■ Air Content ■ Density (unit weight) ■ Casting specimens ■ Time requirement

CRMCA Concrete Testing Assessment Program
Sample Collection Not Meeting Requirements in 2017



CRMCA Concrete Testing Assessment Program
Initial Curing Environment for Specimens Cast in 2017



CRMCA Concrete Testing Assessment Program
Temperature Monitoring Devices Utilized in 2017

