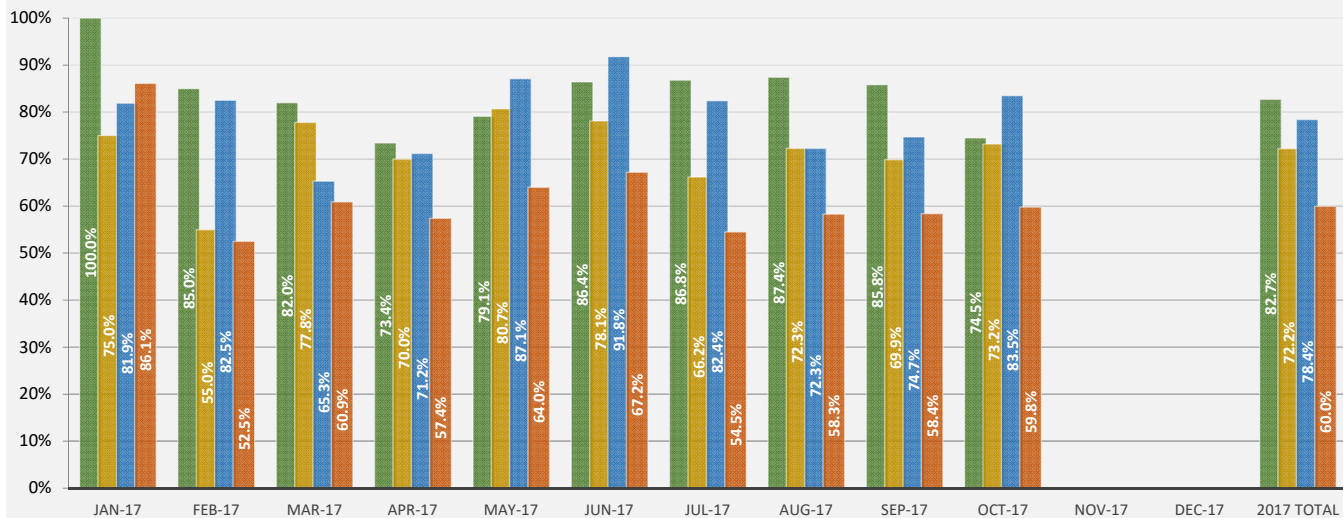




### CRMCA Concrete Testing Assessment Program Percentage of Each Question Meeting Requirements



Q1 - Is the testing technician currently ACI Field 1 certified to test concrete?

Q2 - Excluding preliminary check tests, was the concrete sampled in accordance with ASTM C172?

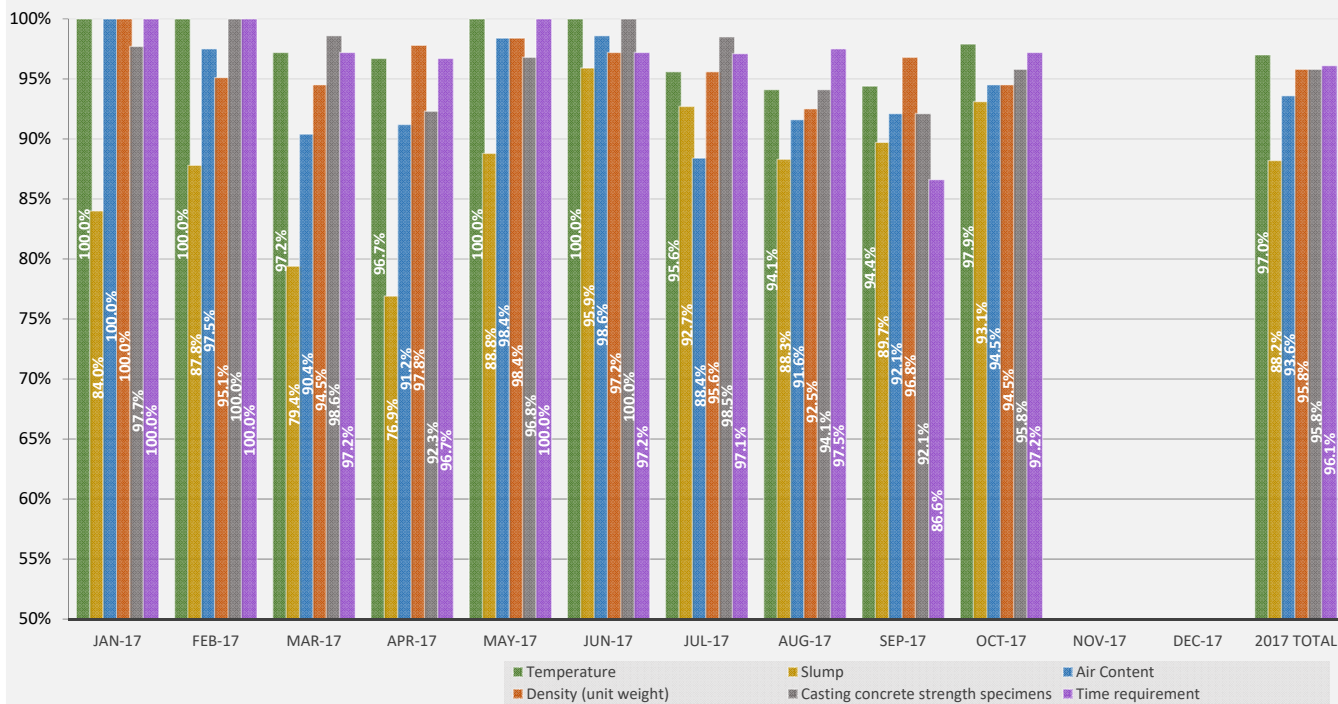
Q3 - Were physical property tests completed and strength specimens molded (if required to cast) in accordance with the appropriate ASTM procedure?

Q4 - Were the concrete specimens (if required to cast) stored in an initial curing environment following ASTM C31, section 10.1.2?

■ Question 1 ■ Question 2 ■ Question 3 ■ Question 4

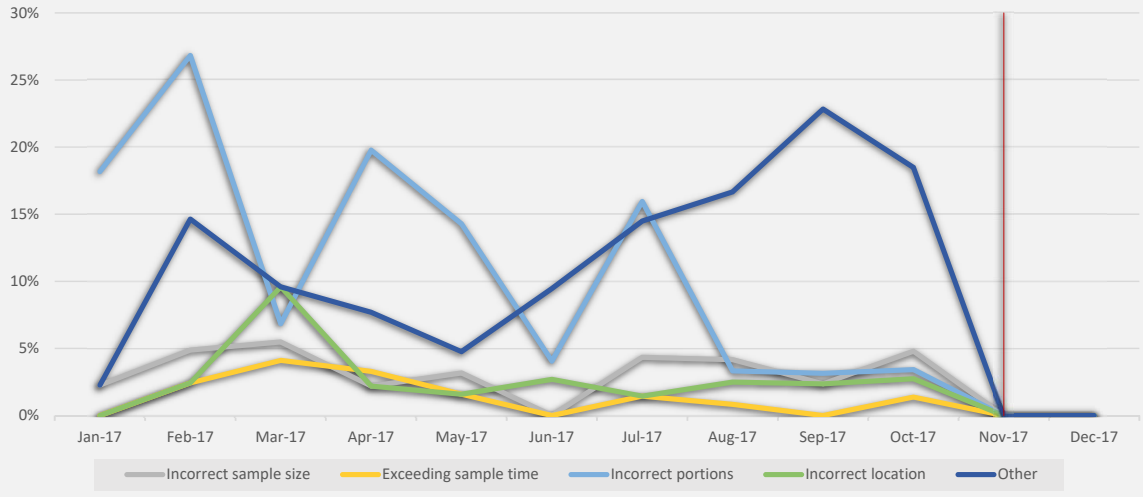


### CRMCA Concrete Testing Assessment Program Percentage of Each Test Procedure Meeting Requirements

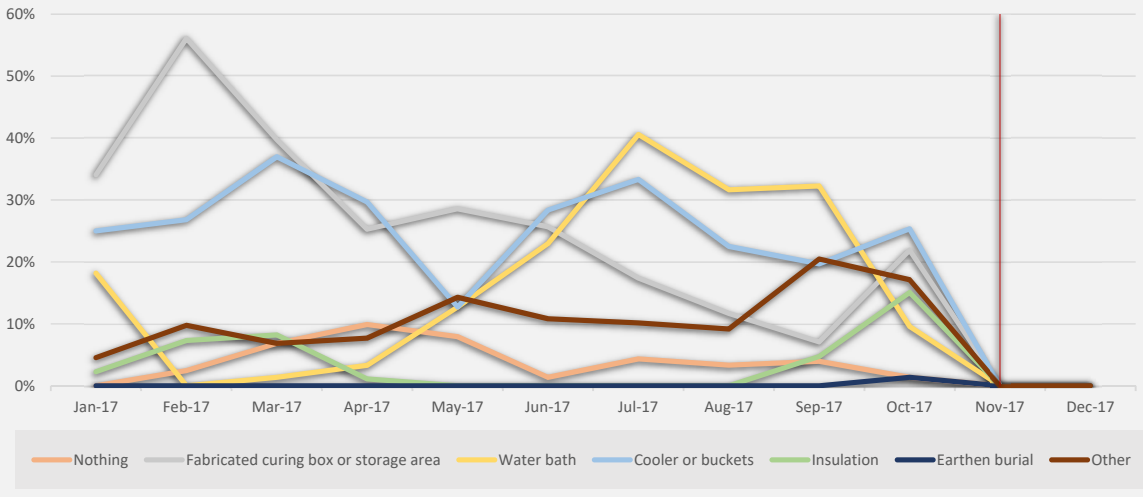


■ Temperature ■ Slump ■ Air Content  
■ Density (unit weight) ■ Casting concrete strength specimens ■ Time requirement

**CRMCA Concrete Testing Assessment Program**  
**Sample Collection Not Meeting Requirements in 2017**



**CRMCA Concrete Testing Assessment Program**  
**Initial Curing Environment for Specimens Cast in 2017**



**CRMCA Concrete Testing Assessment Program**  
**Temperature Monitoring Devices Utilized in 2017**

