

# Testing Adherence Program – Concrete Questionnaire Guide



At CRMCA, we would like to continue to expand the Assessment Program. To do so, we must have excited personnel to assist us across the State of Colorado. We invite both concrete producer and engineering laboratory employees to be Assessors. An assessor must be a CRMCA member, have experience and/or knowledge in concrete testing, and hold an ACI Field 1 Technician certification.

If you registered during the previous version of the Assessment Program, your user login and password will remain the same. If you have not been previously approved to be an assessor in this program or need updated credentials, please contact JT Mesite at [jt@coloradocaa.org](mailto:jt@coloradocaa.org) with the subject line “Assessor request”. **You must provide your name, company, email, and a brief summary of your experience (years testing concrete, certification #, supervisor, etc).**

## Website-Based Questionnaire

*This option can be accessed by non-mobile devices and most mobile devices.*

1. Go to: <http://www.crmca.org/assessment-program/>
2. Login using your email and created password.

If you registered through the link but have not contacted JT Mesite ([jt@coloradocaa.org](mailto:jt@coloradocaa.org)) about registering as an Assessor, you will not be able to submit the questionnaire until approval has completed.

### Contact JT Mesite for approval as an Assessor.

3. Complete the questionnaire, following the popup questions, depending on responses.

4. You can upload photos taken through the “choose file” link at the appropriate locations throughout the questionnaire.
5. Submit your completed questionnaire after all answers have been completed and any photos have been uploaded.

**You must be connected to a network to submit. Data will be lost if you are not connected!**

6. Access to the PDF form document is also available at <http://www.crmca.org/assessment-program/>. Reporting results will soon be available regularly at this website as well.

# Testing Adherence Program – Concrete Questionnaire Guide



## Android & iOS (iPhone, iPad) Apps

1. Download the app through the Google Play Store or Apple Store using the links below or search via your mobile device:

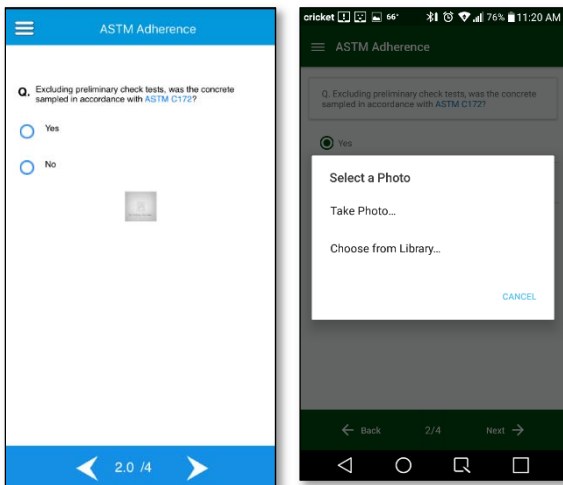
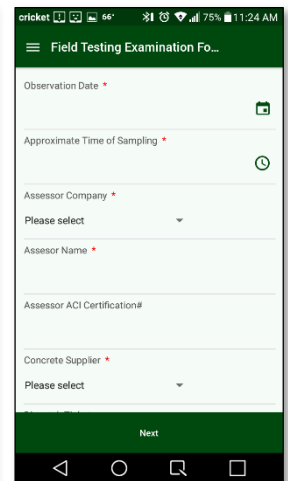
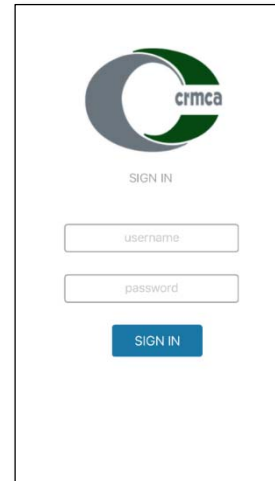
Android: <https://play.google.com/store/apps/details?id=com.crmca.admin.crmca&hl=en>

iOS: <https://itunes.apple.com/in/app/crmca-field-assessment-app/id1079271415?mt=8>

2. Login using your email and created password. If you have not contacted JT Mesite ([jt@coloradocaa.org](mailto:jt@coloradocaa.org)) about registering as an Assessor, you will not be able to use the mobile apps.

### Contact JT Mesite for approval as an Assessor.

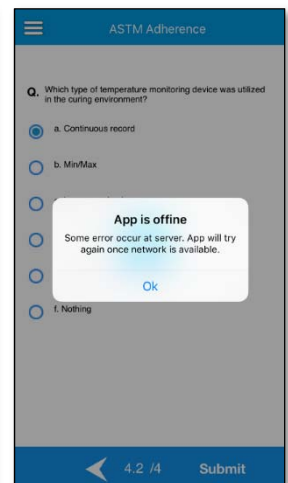
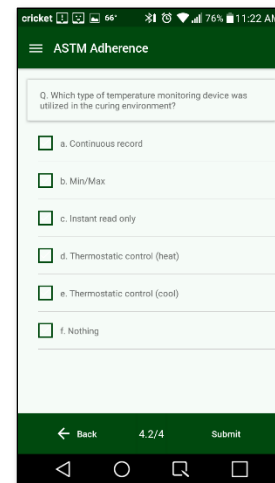
3. Complete the questionnaire, following each question, depending on responses.
4. You can upload photos taken by clicking on the image link at the appropriate locations throughout the questionnaire.



5. Submit your completed questionnaire after all answers have been completed and any photos have been uploaded.

### You do NOT have to be connected to a network to submit.

If you are not connected to a network when submitting the assessment, the data will be saved and sent the next time the app is loaded while connected to a network.



## PDF “paper” Submittal

1. A PDF version of the assessment questionnaire can be downloaded from here: <http://www.crmca.org/assessment-program/>

Navigate to above the login section to download the PDF. The PDF document is a fillable form with available selections if you wish to use it through a computer or non-mobile device while not connected to a network. The PDF can also be printed to be used when a computer or tablet is not available.

2. To submit the assessment, two options are available:
  - a. Input the data into the website-based questionnaire or mobile app when a network is available, or
  - b. Email the document to JT Mesite at [jt@coloradocaa.org](mailto:jt@coloradocaa.org) for submittal.